

RC Panels

Radiant Ceiling Heating Panels



Applications

- Single dwelling homes
- Assisted Living Facilities
- Condominiums
- Basements
- Townhouses



Enjoy the surrounding warmth of a radiant ceiling heating system.

The ceiling panels come in different lengths allowing you to heat any sized room. With individual controls allowing you to set both the temperature of each room the way you like it and not wasting energy in doing so.

Radiant Heat: Radiant energy travels in straight lines and is absorbed by objects in the room, warming the space. Air quality is maintained because no forced air movement occurs with radiant heating.

Maintenance Free: Radiant panels have no moving parts, so they are maintenance free and can provide years of quiet, safe and clean operation.

Warranty: 20 years on the heater.

Standard Construction Features

Heating Element – High quality alloy resistance wire is dielectrically insulated with a PTFE compound rated for 250°C (482°F).

Panel Design – Panel is made of 1/2 inch thick gypsum with a wire embedded within.

Electrical – 2 non-heating lead wires are connected in parallel to a direct burial wire using 3M567 self tapping connectors and a plastic cover slide over the connections for added protection.

Watt Density Range - 17 –21 watts per square foot when energized on design voltage

Installation Requirements – Heaters are installed in the ceiling between the joists or strapping before the finished drywall is installed.

No change to your construction method is needed.

A room by room heat loss should be done to ensure enough heat is install based on the design and the location.

Once panels are connected and verified using ohm meters, the ceiling drywall can be installed as normal.



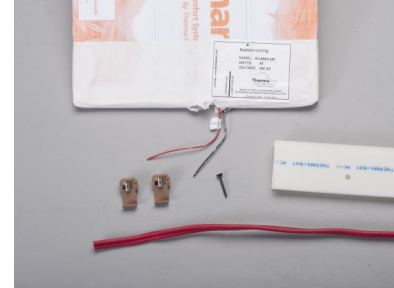
RC Series

Radiant Ceiling Heating Panels

Field Installed Options

(shipped loose for field installation)

Catalog Number	Description
3M567	Self-tapping connector for use with 12 AWG direct burial wire.
PC-1	A plastic endcap that is slid over the 3M567 connectors as a precaution to protect the feed wire and connections. The endcap is screwed (a screw is included) to the panel on the black line as indicated
MC-2	Metal endcap used for grounding when armored cable is a requirement on a project. This occurs when metal channels are used instead of wood strapping in the ceiling.



Control Option #1

All SRDP2 models are rated for the following voltages:
120V, 208V, 240V 277V, 347V

Catalog Number	Description
SR-LV	Low Voltage thermostat c/w plaster ring. Floor or remote limit sensor(s) must be ordered at the same time. Requires connection to the SRDP2 (Distribution Panel)
SR-LV-B	Same as the SR-LV but with a box ring for double gang electrical box instead of the plaster ring
SR Sensor	15' (4.5 m) Long. Longer lengths available
SRDP2-10-10	Distribution Panel with 10 RJ 45 ports for thermostats and 10 - 20 amp relays
SRDP2-10-20	Distribution Panel with 10 RJ 45 ports for thermostats and 20 - 20 amp relays
SRDP2-20-20	Distribution Panel with 20 RJ 45 ports for thermostats and 20 - 20 amp relays

Control Option #2—WiFi enabled with remote sensor option

These models are rated for the following voltages:
120V, 208V, 240V 277V, 347V

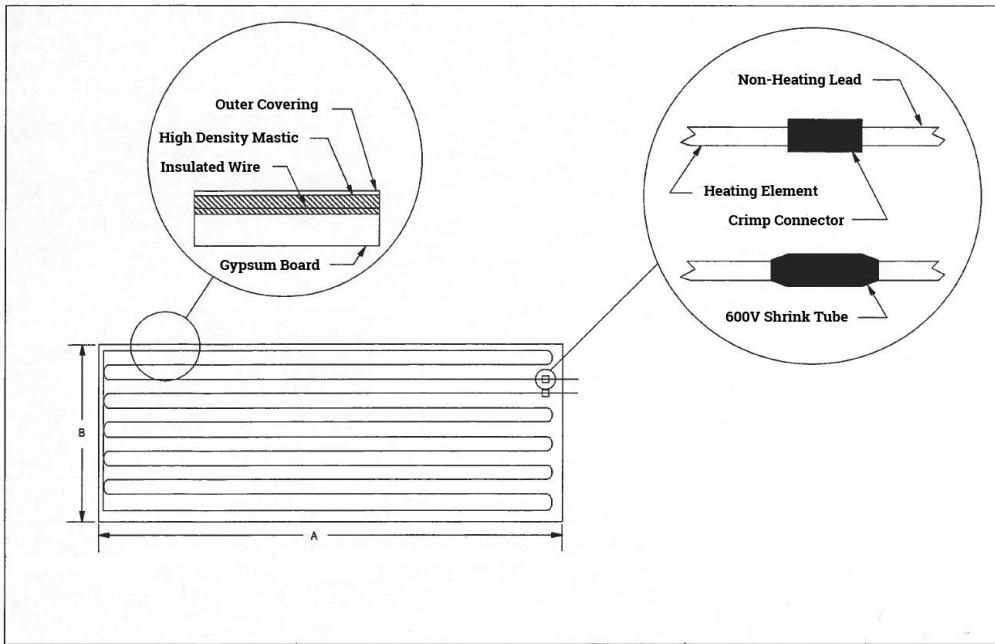
These controls are paired with Sinope Thermostats with remote sensors

Catalog Number	Description
SC-10	10—20 amp relays, 10—24 VAC thermostat din rail connections. Rated for loads 120, 208, 240, 277 & 347 VAC. Relay enclosure. Works with Smart WiFi programmable and non-programmable thermostats. Can work with building management system (BMS).
SC-20	20—20 amp relays, 20—24 VAC thermostat din rail connections. Rated for loads 120, 208, 240, 277 & 347 VAC. Relay enclosure. Works with Smart WiFi programmable and non-programmable thermostats. Can work with building management system (BMS).

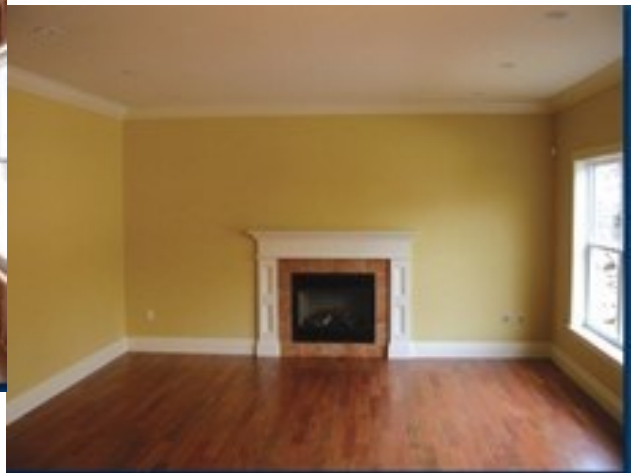


RC panels

Radiant Ceiling Heating panels



Cutaway view of a Radiant Ceiling Heating Panel



RC Panels

Radiant Ceiling Heating Panels

Sizing

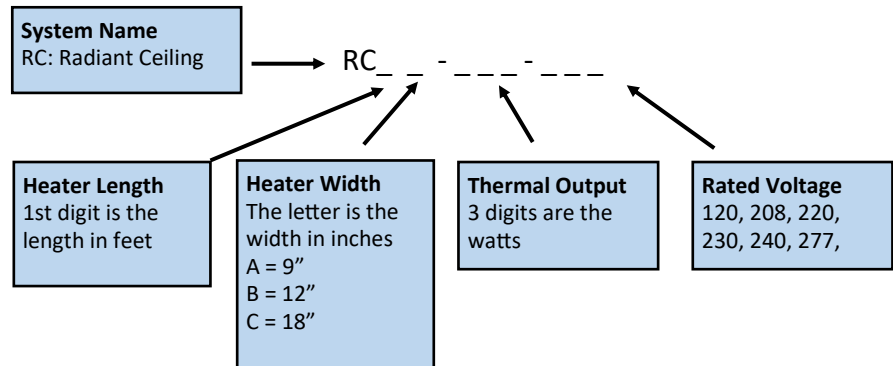
“A” panels = 9” (inches) wide. They fit between 12” (inch) on center joist spacing.

“B” panels = 12” (inches) wide. They fit between 16” (inch) on centre joist spacing.

“C” panels = 18” (inches) wide. They fit between 18” (inch) on centre joist spacing.

Example Model Names:

RC7B150-240



VOLTAGE	WATTS	LENGTH (feet)	WIDTH (inches)	CATALOGUE #	WEIGHT (lbs)
240	130	8	9	RC8A130-240	10.2
240	95	6	9	RC6A095-240	7.7
240	70	4	9	RC4A070-240	5.1
240	175	8	12	RC8B175-240	13.6
240	150	7	12	RC7B150-240	11.9
240	130	6	12	RC6B130-240	10.2
240	105	5	12	RC5B105-240	8.5
240	85	4	12	RC4B085-240	6.8
240	70	3	12	RC3B070-240	5.1
240	260	8	18	RC8C260-240	20.4
240	230	7	18	RC7C230-240	17.9
240	195	6	18	RC6C195-240	15.3
240	160	5	18	RC5C160-240	12.8
240	130	4	18	RC4C130-240	10.2
240	95	3	18	RC3C095-240	7.7
240	70	2	18	RC2C070-240	5.1

